

**Happy New Year to all our  
Brindishe Families!**



Brindishe  
Federation

# Brindishe Federation Newsletter

Friday 12th January 2024



## Reception 2024 Deadline - Monday 15th January

Children who were born between 1st September 2019 and 31st August 2020 are eligible to start Reception class in September 2024. The deadline for applications to start school in September 2024 is **15th January 2024**. An email will be sent to you on the evening of Tuesday 16th April 2024 telling you where your child has been offered a place. Lewisham Council expects all prospective parents to make applications on-line. You can apply here:

### **APPLY ONLINE**

Parents and carers will receive an email after 5pm on the evening of Tuesday 16th April 2024 detailing the school place offer. Parents and carers must accept their offer online by Wednesday 3rd May 2023. (Make sure you have saved your log in details).

Please note that having a place in a Brindishe nursery does not guarantee a place in reception; a new application must be made.

## School Meals Spring Term Update

As you would have seen from our separate communication, from Monday 15th January, we will be letting you and your child **CHOOSE their meal choice on a daily basis**. So, if you choose to have school dinners on a Monday, Tuesday, Wednesday and Thursday and on Friday have a packed lunch, that is fine. The teacher will ask your child each day for their choice when taking the register. We hope, that ALL children, will want school dinners everyday...

BUT.....if you decide to choose on a daily basis, please ensure your child knows each day if they are having a school meal or a packed lunch. You will need to let your child know what the choice is for each day which can be found on the school websites.

IF your child is having a packed lunch, please ensure they bring it to school with them in the morning.

If you want to know more about Radish, school meals, allergy menus etc, please go to the virtual office on the school website.

If you can't find what you are looking for, please contact Clare Doran:

E: [schoolmeals@brindisheschools.org](mailto:schoolmeals@brindisheschools.org)

M: 07943 041790

## The Spring Term Menus.....

- New menus began at the beginning of January
- The menus work on a three week cycle
- Menus can be found under the virtual office tab on the school website
- Year 5 and 6 have a separate menu which includes baguettes as the third option

	Monday	Tuesday	Wednesday	Thursday	Friday
Option 1	...	...	...	...	...
Option 2	...	...	...	...	...
Option 3	...	...	...	...	...
Vegetables	...	...	...	...	...

# Brindishe Schools Music Tuition

Brindishe Schools are looking to improve and extend their music tuition offer for our children. Currently, we offer a range of music tuition for a variety of instruments and singing, but we are keen to expand this.

Do you know someone who is a self-employed music tutor or a company that can offer a range of musical instrument tuition? If so, we'd love to hear from you.

Please contact Nikki Tatler (Brindishe Schools Procurement Manager) by emailing [NiTatler@brindisheschools.org](mailto:NiTatler@brindisheschools.org).



## Talk Consent Parent/Carer Workshops - Year 5 & 6

As part of the PSHME curriculum around healthy relationships we are inviting speakers from Talk Consent to run an assembly with our Year 5 children and workshops in classes for our Year 6 children from across the federation. The theme will be based on consent. As you will know consent is threaded through our curriculum from Early Years to Year 6 focusing on the importance of setting clear and respectful boundaries so children can build healthy friendships while also building their self-advocacy skills.

As part of this package we would like to invite you a parent talk by Talk Consent. During these sessions they will cover what the children will be learning about and how to discuss these issues with your children at home.

The session will take place on **Monday 15th January 2024 at 7pm** and will be held online. If you would like to join the session, please contact the school office who will send you the link.

If you would like to know more about the sessions and what they involve here is the website of company delivering the sessions: <https://talkconsent.org/consent-workshop/>

**Talk Consent**  
Education to End Sexual Violence.

## Governing Body

If you would like to attend a Brindishe Federation Governing Body meeting, please email our Chair of Governors, Liz Murphy - [lmurphy@brindisheschools.org](mailto:lmurphy@brindisheschools.org). Our third meeting of this academic year is on **Tuesday 6th February at 6pm** at Brindishe Manor School.

## Key Federation Dates

- Reception Admissions Deadline - **Monday 15th January**
- Talk Consent Parent/Carer Workshops - **Monday 15th January**
- End of Term - **Friday 9th February**
- Half Term - **Monday 12th February to Friday 16th February**
- Children return to school - **Monday 19th February**
- Secondary Offer Day - **Friday 1st March**

## Attendance Newsletter

Across the Brindishe Federation, we firmly believe that regular school attendance is essential for the educational progress and overall wellbeing of all our pupils. It is about working in partnership with our children, parents, carers and the Local Authority to ensure we set high expectations. We hope that this letter helps you to keep in mind the key aspects of our attendance policy.

### Why does regular attendance matter?

Keeping attendance above 96%, allows your child to:

- Fully engage in learning and make academic progress
- maintain friendships and develop new ones
- Grow in confidence in a supportive and nurturing school environment
- Build a sense of routine and responsibility, essential for future success

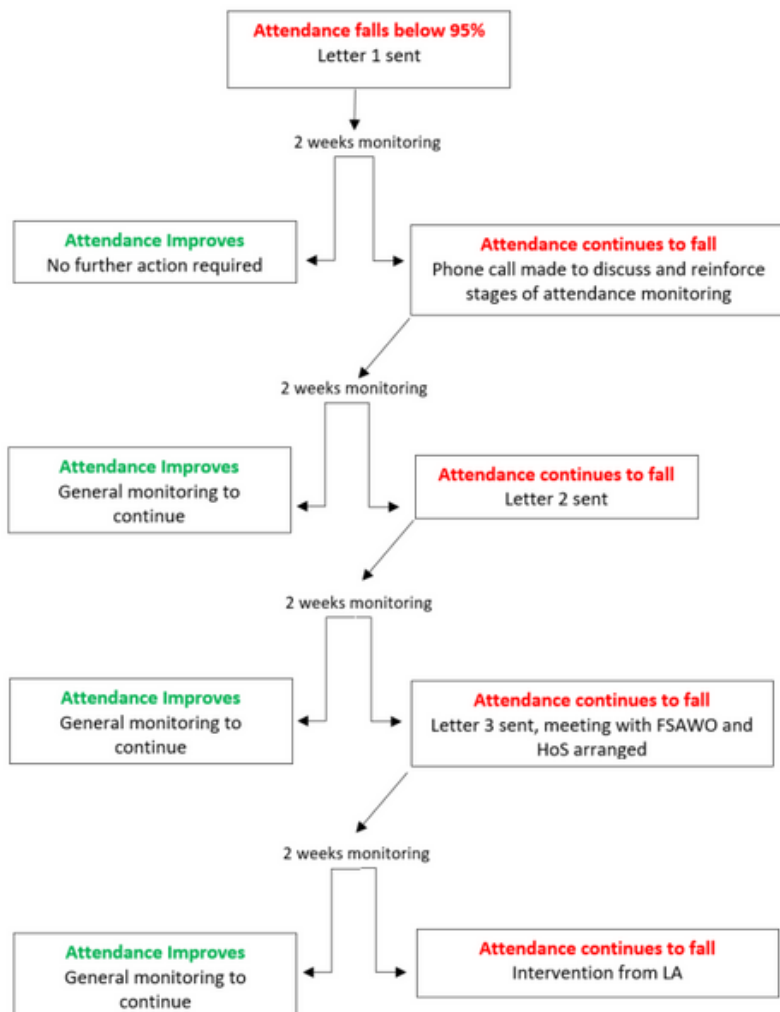


### How do we monitor attendance?

Every fortnight, staff at the school monitor their attendance.

If your child's attendance:

- falls below 95%, you will be sent a letter to remind you of the importance of attendance in school
- continues to fall, a member of staff will call you to discuss your child's attendance
- continues to fall further, you will be sent a letter regarding the loss of learning time
- continues to fall further, you will be invited in for a meeting with the HoS and FASWO
- does not improve, you will be sent a letter from the LA informing you of potential legal procedures including a court warning



### What does a percentage look like in days?

Below shows how your child's attendance can be affected if they are off. We aim for all children to be around 96%.

- 95% (2 weeks) 9 days off in a school year
- 90% (4 weeks) 19 days off in a school year
- 85% (6 weeks) 29 days off in a school year

### What absence will we authorise?

We recognise that there are circumstances where a pupil's absence can't be avoided.

Acceptable reasons for being absent from school include:

- Illness
- Medical appointments: if your child has a medical appointment that CANNOT be scheduled outside school hours, please notify us in advance and provide relevant documentation (e.g. an appointment card)
- Religious observance
- Exceptional circumstances

# Don't forget about Punctuality!

The school registers close, straight after the gate shuts, so being in school on time is very important. Missing the start of a lesson means your child is missing their learning and can be very disruptive and unsettling. Minutes late can also affect your attendance, so make sure your child is in school on time.



## How should you report an 'unplanned' absence?

In the event of an unplanned absence, we request you follow these steps:

- Contact the school: on the day of the absence, please call the school office before 9am and leave a message to inform us about your child's absence.
- Provide a reason for absence: please provide a brief explanation for the absence, such as illness or family emergency, to help us maintain accurate records.

## Can I go on holiday during term-time?

Term-time holidays are generally not permitted during the school year. Absences due to term-time holidays are disruptive to learning and lead to missed opportunities in the classroom.

However, we recognise that there may be exceptional circumstances that require a term-time holiday. In such rare cases, please submit a formal request to the head of school well in advance. The head of school will carefully consider each request and, if deemed appropriate and in the best interest of the child, may grant permission for the term-time holiday.

We emphasise that such instances will only be considered on a discretionary basis, and the decision will be made with the pupil's educational welfare as the utmost priority. We appreciate your cooperation and understanding regarding our approach to term-time holidays.

## Fines for unauthorised absence

The Local Authority/head of school may issue a fine (known as a fixed-penalty notice) for unauthorised absence. If issued with one, you'll need to pay this directly to the local authority – £60 within 21 days, or £120 within 28 days.

The decision whether to issue a fine may take into account factors such as the number of unauthorised within a rolling academic year and one-off instances of irregular attendance.



## What support can we offer?

We understand that some pupils may face challenges that impact on their attendance. Our school's attendance team is here to provide support and guidance to pupils and families in such situations. If you encounter any difficulties related to attendance, please get on touch with either your child's class teacher, a member of the schools SLT team or Clare Doran (FSWAO).

**If you are worried about your child/children's attendance the first port of call is to discuss your concerns with the school directly. Please feel free to contact Clare on 07943 041970**

**A big thank you to for working with us to make sure our children attend school regularly!**